

FLEX – SCALPER V3

USER GUIDE

Disclaimer

Risk Warning: Trading leveraged products such as Forex may not be suitable for all investors as they carry a degree of risk to your capital. You can lose all your money. Please be careful.

You must be aware of the risks and be willing to bear any level of risk to invest in financial markets. Past performance is not indicative of future results.

Flex Scalper EA and all individuals associated assume no responsibility for your trading results or investments. Please ensure that you fully understand the risks involved.

Table of Contents

- What is Flex Scalper ?**
- Warning & Precautions**
- FX Broker**
- VPS Provider**
- Registration & Activation**
- MT4 Installation**
- Flex Scalper EA Installation**
- Overview Flex Scalper**
- 2 Modes Flex Scalper**
- Parameter Settings**
- Recommended Pairs, Balance & Leverage**
- Tips & Contact Us**

What is Flex Scalper ?

Flex Scalper is an EA runs on Metatrader 4 (MT4) using Martingale Strategy (DCA – Dollar cost averaging), It is very flexible user can setup their own preferences using this EA. It works on FX, Commodities (Gold, Metal) and Cryptocurrency

Highlighted Featured

- Flexible parameters to setup
- Stop Loss based on %balance, pips, and amount
- Trailing to optimize profit
- Inverse Mode (hedging), EA will always open position in hedging (buy and sell simultaneously) and generate profit in any directions
- Auto Hedging (available in V3.0)
- Works on any markets FX, Gold, or Crypto
- Can be installed on MT4 with low balance account: \$50 (with XM Micro Account)
- Free 100% and unlimited (as many account as you want, with no expiry date)

Warning & Precautions

1. FX Trading is very risky, try using demo account before install the EA to real account
2. Be very careful on setting parameter LOT SIZE, setting it too large can generate and blow up your account as well quickly.
3. Study thoroughly how this EA works before applying it to real account
4. Using VPS is highly recommended, choose VPS location near broker's server to minimize latency (Amsterdam or London)
5. Flex Scalper is METATRADER 4 based EA (doesn't work on MT5).
6. Do not run 2 EA on same account using different computers, it will ruin the EA's algorithm, and cannot work properly

FX Broker

Below is the recommended FX Broker.

User can use this EA for 100% Free if installed to MT4 opened using below link

XM – <https://flexscalper.com/xm>

XM broker is highly regulated and reputable broker.

User may use their own FX brokers, however they need to subscribe for licensing

We DO NOT markup spread for opening account using our preferred broker,
MT4 accounts opened need to be registered, the EA Flex Scalper license will be given for free and without expiry date

VPS Provider

It is recommended to use VPS, below is our recommended VPS Provider
You can freely use any VPS provider though.

- FXVM – <https://flexscalper.com/fxvm> (choose WIN server 2012) EA doesn't work on any other Windows OS

Recommended Location based on broker

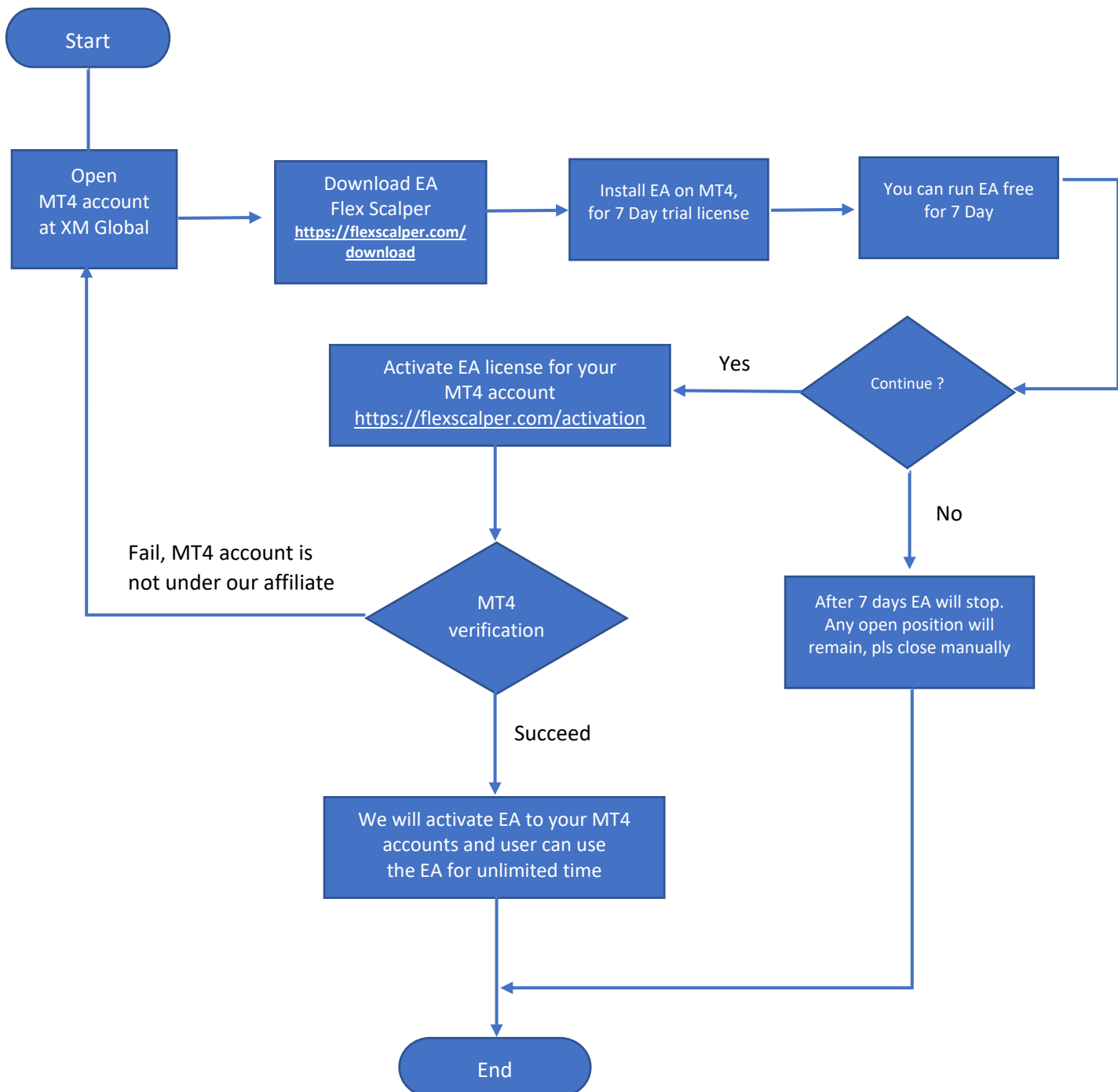
- XM – choose London server / or Amsterdam server

Registration & Activation

To give user understanding how the registration process, below is the diagram of it.

Should you need several MT4 accounts you can repeat the registration process. We do not limit the total number of MT4 as long as they are opened under our referral

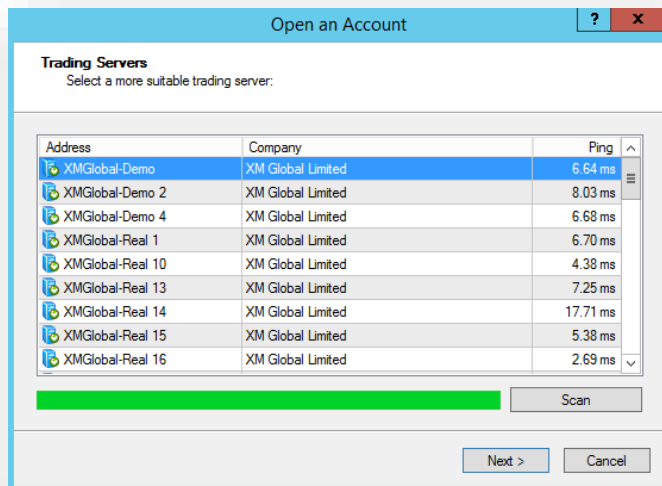
Important: License for dormant MT4 account which are not used for the last 6 months will be deleted.



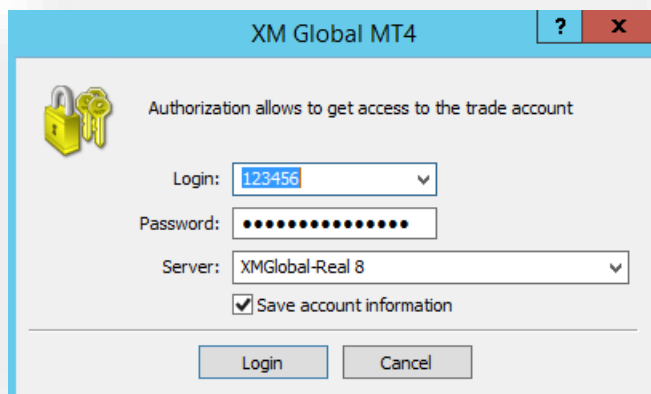
MT4 Installation

How to install MT4

1. Login to member area FX broker and download MT4 for desktop
2. Select FILE – OPEN AN ACCOUNT – Choose Trading Server accordingly – NEXT or by Entering “XM GLOBAL” in the last line of server selection

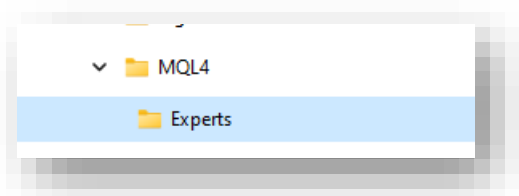


3. Choose Existing Trade Account – Login with your MT4 number and Password

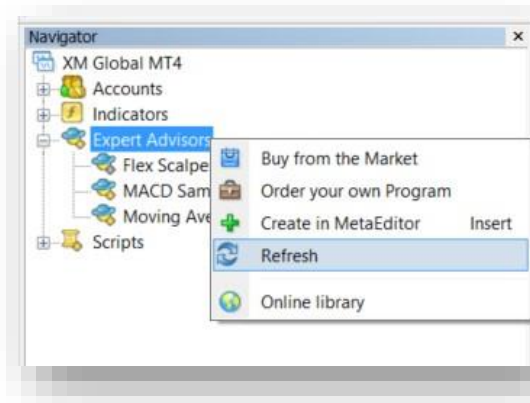


Flex Scalper EA Installation

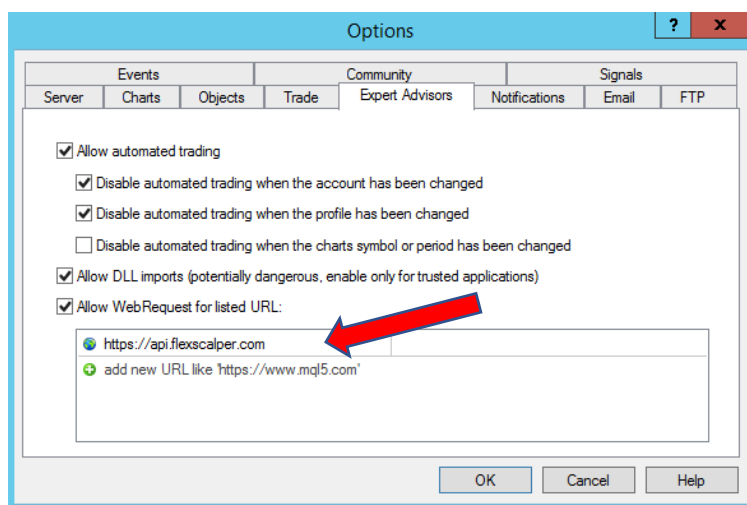
1. Download EA using this link
<https://flexscalper.com/download>
2. Select menu FILE – OPEN DATA FOLDER
3. Go to folder MQL4 -- Experts and copy EA file to the folder.



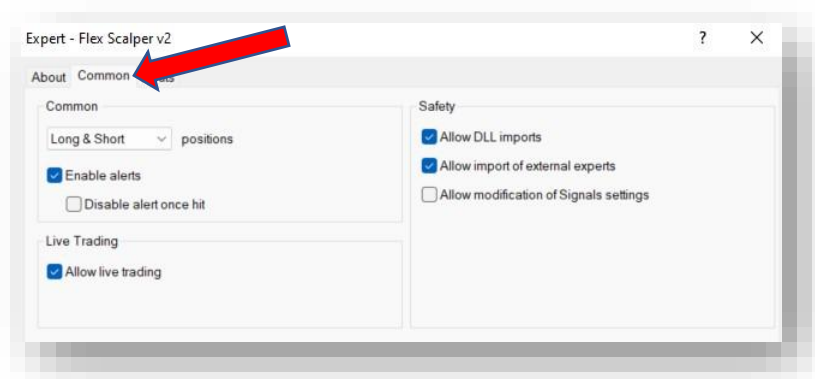
4. Go to menu Navigator – right click Expert Advisor – Refresh, then you'll see the Flex Scalper EA



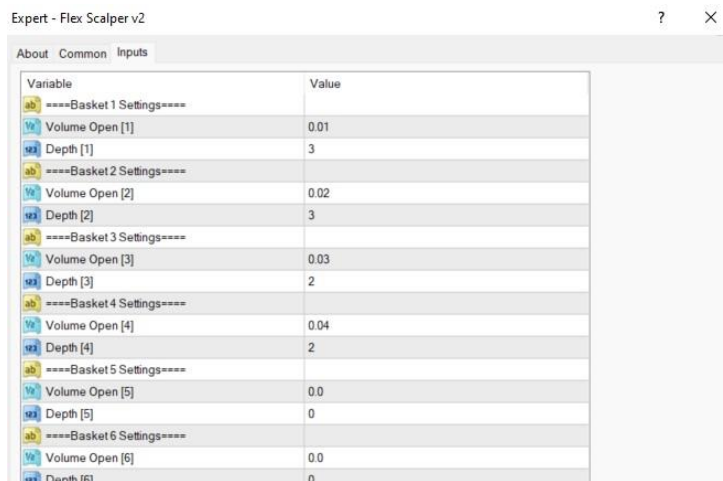
5. Click menu TOOLS – OPTIONS – Tab Expert Advisor
Check on “Allow automated Trading” “Allow DLL Imports” and
Check on the “Allow Web Request for listed” and fill in <https://api.flexscalper.com>



6. Open Chart that you want to be installed (any timeframe), Click – Drag Flex Scalper to the chart.
Set on COMMON tab as below:



7. Set parameter on the INPUT tab (it will be explained further below)



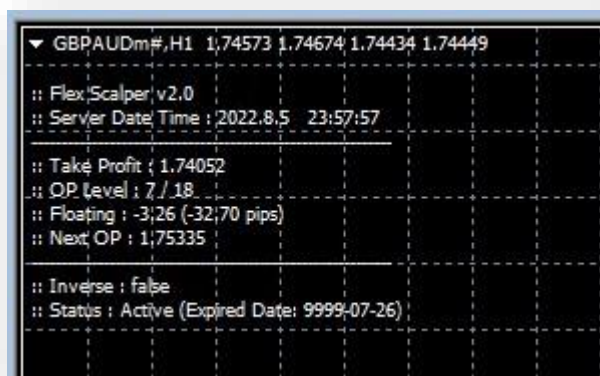
Flex Scalper Installation Successful

After installation you can see smiley icon on top right corner.



Overview Flex Scalper

On top left corner you can see some information as follows:



Take Profit : TP level, this is price the EA will close position to Take profit

OP Level : On going open position 7/18 means currently there are 7 level of active open position from total 18

Floating : Floating profit / loss (drawdown)

Next OP : Next open position level

Inverse: if False – hedging is not active, if true, EA works in hedging mode.

Status : Active or Expired.

2 Modes of Flex Scalper

Flex Scalper has 2 modes you can use

1.Normal Mode (classic martingale – DCA)

On normal mode, EA is installed only on 1 chart for 1 pair, EA then will decide whether to take open **buy or sell** trading position, according to the trend. If uptrend, then EA will open buy, and vice versa.
EA works using DCA strategy which user can set from the parameter (will discussed further below)

2. Inverse Mode (hedging martingale- DCA)

On Invers mode, EA is installed on 2 chart for 1 pair, e.g: if installed on EURUSD

Open 2 charts of EURUSD (any timeframe), install EA to both charts with

- 1 chart parameter inverse : false and
- 1 other chart parameter inverse : true

EA will open position in both direction immediately, so wherever the price will move, EA will always generate profit.
Invers mode is aggressive, generate profit fast, but with higher drawdown, and higher risk. (choose wisely)

Parameter Setting

Below is the parameter setting for EA

Expert - Flex Scalper v3.0 ? X

About Common Inputs Dependencies

Variable	Value
ab =====Basket 1 Settings=====	
Volume Open [1]	0.1
Depth [1]	4
ab =====Basket 2 Settings=====	
Volume Open [2]	0.2
Depth [2]	3
ab =====Basket 3 Settings=====	
Volume Open [3]	0.3
Depth [3]	2
ab =====Basket 4 Settings=====	
Volume Open [4]	0.4
Depth [4]	1
ab =====Basket 5 Settings=====	
Volume Open [5]	0.0
Depth [5]	0
ab =====Basket 6 Settings=====	
Volume Open [6]	0.0
Depth [6]	0
ab =====Basket 7 Settings=====	
Volume Open [7]	0.0
Depth [7]	0
ab =====Basket 8 Settings=====	
Volume Open [8]	0.0
Depth [8]	0
ab =====Basket 9 Settings=====	
Volume Open [9]	0.0
Depth [9]	0
ab =====Basket 10 Settings=====	
Volume Open [10]	0.0
Depth [10]	0
ab =====Open Settings=====	
Distance Level (Pips)	35.0
Basket Multiplier	14.0
ab =====Close Settings=====	
Take Profit (Pips)	5.0
Take Profit (\$)	0.0
ab =====Stop Loss Settings=====	
Stop Loss (% Balance)	0.0
Stop Loss (\$)	0.0
Stop Loss (Pips)	0.0
ab =====Trailing Settings=====	
Trailing Stop (Pips)	0.0
Trailing Step (Pips)	0.0
ab =====Hedging Settings=====	
Hedge Multiplier (0. Off Hedging)	0.0
Hedge Open (Pips)	0.0
Hedge Stop Loss (Pips)	0.0
Hedge Take Profit (Pips)	0.0
Hedge BEP (Pips)	0.0
ab =====Other Settings=====	
Inverse Mode	false
Stop After TP	false

Load Save

OK Cancel Reset

Basket : group or collection of same-size orders
There are 10 baskets, each can be define its own lot size

Volume Open : lot size

Depth : how many times EA will open position on certain basket.

===== **OPEN SETTINGS** =====

Distance Level – pips : distance between OP on Basket 1

Basket Multiplier: multiplier factor between baskets

===== **CLOSE SETTINGS** =====

Take profit (Pips) : take profit based on pips

Take profit (\$) : take profit based on fix amount

===== **STOP LOSS SETTINGS** =====

Stop Loss (% balance) : stop loss based on % balance, e.g: set 20%, then if total balance \$1000 and floating loss for certain pair is -\$200 then EA will close all position on that particular pair

Stop Loss (\$) : stop loss based on fixed amount. E.g: set 100, then if total floating loss is -\$100, EA will close all position on that particular pair

Stop Loss (pips) : stop loss based on pips distance. E.g : set 400 pips, then if total distance between last price & opening price from 1st level on pair is 400, EA will close all position on that particular pair

===== **TRAILING SETTINGS** =====

Trailing Stop (Pip): once price achieve TP level, EA will trailing TP.

E.g Trailstop : 10 pips and TakeProfit : 20 pips, then once the TP level is hit, EA will not immediately close position, instead SL level will be set 10 pips below, and trailing accordingly

Trailing Step (Pip) : Stepping of trailstop,
e.g trailstep : 2 pips, SL level on the Trailing will be updated every 2 pips.

===== **HEDGING SETTINGS** =====

Hedge Multiplier : lot size of hedging pending order
e.g if you set to 1.1, then lot size of hedging will be 1.1x of total basket lot size or (10% more)
please refer to the video tutorial for this feature for more detailed explanation

Hedge Open (pips): distance between current price to hedge pending order

Hedge Stop Loss (pips): stop loss of hedge pending order

Hedge Take Profit (pips): take profit of hedge pending order

Hedge BEP (pips): how many pips after hedge active and stop loss is increase to Break Even Point.

===== **OTHER SETTINGS** =====

Inverse Mode : false (normal) or true (hedging)

Stop After TP : True – EA will not open new position after TP. (or hit stoploss or trailstop)

NORMAL MODE

EA installed on 1 chart (any timeframe)

Example 1 :

Basket 1 – Volume Open : 0.01 lot

Basket 1 – Depth [1] : 5

Basket 2 – Volume Open : 0.02 lot

Basket 2 – Depth [2]: 5

Distance Level pip : 20 pip

Multiplier Basket : 1.3

TP : 10 pip

Inverse: False

EA will OP Buy Level 1 size : 0.01 lot, if price goes down for 20 pips, then OP buy level 2 until level 5(every 20 pips), if price goes down further then OP buy level ke 6 s/d level 10 every 20 pip x 1.3 = 26 pip.

If price goes down further, then EA will not open position anymore.

EA will TP 10 pip above average price of those 10 position (all positions will be closed at once)

NORMAL MODE

EA installed on 1 chart (any timeframe)

Example 2:

Basket 1 – Volume Open : 0.01 lot

Basket 1 – Depth [1]: 1

Basket 2 – Volume Open : 0.02 lot

Basket 2 – Depth [2]: 1

Basket 3 – Volume Open : 0.03 lot

Basket 3 – Depth [3]: 1

Basket 4 – Volume Open : 0.04 lot

Basket 4 – Depth [4] : 1

Basket 5 – Volume Open : 0.05 lot

Basket 5 – Depth [5]: 1

Basket 6 – Volume Open : 0.06 lot

Basket 6 – Depth [6]: 1

Basket 7 – Volume Open : 0.07 lot

Basket 7 – Depth [7]: 1

Basket 8 – Volume Open : 0.08 lot

Basket 8 – Depth [8]: 1

Basket 9 – Volume Open : 0.09 lot

Basket 9 – Depth [9]: 1

Basket 10 – Volume Open : 0.10 lot

Basket 10 - Depth [10]: 1

Distance Level pip – 10 pip

Multiplier Basket – 1.5

TP : \$8

Inverse: False

EA will OP Sell Level 1 size 0.01 lot, if price goes up 10 pips,

then OP sell level 2 size 0.02 lot with distance 10 pip x 1.5 = 15 pip, and if price goes up further on and on....

OP sell level 3 size 0.03 lot, distance 15 pip x 1.5 = 22.5 pip
 OP sell level 4 size 0.04 lot, distance 22.5 pip x 1.5 = 33.8 pip
 OP sell level 5 size 0.05 lot, distance 33.8 pip x 1.5 = 50.6 pip
 OP sell level 6 size 0.06 lot, distance 50.6 pip x 1.5 = 76 pip
 OP sell level 7 size 0.07 lot, distance 76 pip x 1.5 = 114 pip
 OP sell level 8 size 0.08 lot, distance 114 pip x 1.5 = 171 pip
 OP sell level 9 size 0.09 lot, distance 171 pip x 1.5 = 256 pip
 OP sell level 10 size 0.10 lot, distance 256 pip x 1.5 = 385 pip

EA will TP if profit from total positions reach \$8

INVERSE MODE

EA installed on 2 chart (any timeframe) with same pairs

Example 3:

Chart 1 – pair EURJPY
 Basket 1 – Volume Open : 0.01 lot
 Basket 1 – Depth [1] : 5
 Basket 2 – Volume Open : 0.02 lot
 Basket 2 – Depth [2]: 5
 Distance Level pip – 20 pip
 Multiplier Basket – 1.3
 TP : 10 pip
 Inverse: **False**

Chart 2 – pair EURJPY
 Basket 1 – Volume Open : 0.01 lot
 Basket 1 – Depth [1] : 5
 Basket 2 – Volume Open : 0.02 lot
 Basket 2 – Depth [2] : 5
 Distance Level pip – 20 pip
 Multiplier Basket – 1.3
 TP : 10 pip
 Inverse: **TRUE**

If EA chart 1 OP Buy, then EA chart 2 will **always** OP Sell.
 OP from each chart will move independently according to each parameter set.
 Wherever EURJPY moves EA will TP 10 pips.
 If price goes up, Chart 1 will TP 10 pips, and if goes down Chart 2 will TP 10 pips, and so on
 Invers mode will generate profit fast HOWEVER expect higher drawdown (floating loss)

Recommended Pairs, Balance, Leverage & Parameter

Below is recommended setting for **MICRO ACCOUNT (XM)** for FX PAIRS

XM Micro Account enable you to open account 1/10 of standard account thus require smaller balance

1 lot Micro Account = 0.01 standard Lot, the minimum open position for Micro account is 0.1 lot (equals to 0.001 lot)

MT4	Pairs	Balance Minimum	Leverage Minimum	Parameter (With Hedging)
1	EURUSD (single pair – you can choose any FX pair)	\$250 Runs EA on normal mode (Invers: false)	1:400	B1: 0.1 – 4 level B2 : 0.2 – 3 level B3 : 0.3 – 2 level B4 : 0.6 – 1 level B5 : 1.2 – 1 level B6 : 2.4 – 1 level Distance level Pip : 30 pips Multiplier : 1.5 TP : 5 pip SL : 0 (\$) Trailing : 0 pip Inverse : False == Optional == Hedge Multiplier : 1.1 Hedge Open: 10 Hedge SL : 50 Hedge TP : 0 Hedge BEP : 10
2	CADJPY EURNZD GBPAUD USDCHF	\$500 Runs EA on normal mode (Invers: false) Fund needed is smaller (combined margin between 4 pairs)	1:400 (the higher the better)	B1: 0.1 – 4 level B2 : 0.2 – 3 level B3 : 0.3 – 2 level B4 : 0.6 – 1 level B5 : 1.2 – 1 level B6 : 2.4 – 1 level Distance level Pip : 30 pips Multiplier : 1.5 TP : 5 pip SL : 0 (\$) Trailing : 0 pip Inverse : False == Optional == Hedge Multiplier : 1.1 Hedge Open: 10 Hedge SL : 50 Hedge TP : 0 Hedge BEP : 10
3	USDCAD NZDJPY EURGBP AUDCHF	\$500 Runs EA on normal mode (Invers: false) Fund needed is smaller (combined margin between 4 pairs)	1:400 (the higher the better)	B1: 0.1 – 4 level B2 : 0.2 – 3 level B3 : 0.3 – 2 level B4 : 0.6 – 1 level B5 : 1.2 – 1 level B6 : 2.4 – 1 level Distance level Pip : 30 pips Multiplier : 1.5 TP : 5 pip SL : 0 (\$) Trailing : 0 pip Inverse : False

				<p>== Optional ==</p> <p>Hedge Multiplier : 1.1 Hedge Open: 10 Hedge SL : 50 Hedge TP : 0 Hedge BEP : 10</p>
4	GOLD (XAUUSD)	\$1000 Runs EA on invers mode	1:400 (the higher the better)	<p>B1: 0.1 – 4 level B2 : 0.2 – 3 level B3 : 0.3 – 2 level B4 : 0.6 – 1 level B5 : 1.2 – 1 level B6 : 2.4 – 1 level Distance level Pip : 100 pips Multiplier : 1.5 TP : 5 pip SL : 0 (\$) Trailing : 0 pip Inverse chart 1: FALSE Inverse chart 2 : TRUE</p> <p>== Optional ==</p> <p>Hedge Multiplier : 1.1 Hedge Open: 20 Hedge SL : 100 Hedge TP : 0 Hedge BEP : 20</p>
4	BTCUSD	\$1000 Runs EA on invers mode	1:250 (maximum leverage for XM account)	<p>B1 : 0.01 – 15 level Distance level Pip : 4000 pip Multiplier : 1.0 TP : 500 pip SL : 0 Trailing : 0 pip Inverse chart 1: FALSE Inverse chart 2 : TRUE</p>

Below is the recommended and ideal setting for STANDARD ACCOUNT untuk FX PAIRS
Pairs below are combination from Major currencies combined to minimize risk

MT4	Pairs	Balance Minimum	Leverage Minimum	Parameter (With Hedging)
1	EURUSD (single pair – you can choose any FX pair)	\$2500 Runs EA on normal mode (Invers: false)	1:400	B1: 0.01 – 4 level B2 : 0.02 – 3 level B3 : 0.03 – 2 level B4 : 0.06 – 1 level B5 : 0.12 – 1 level B6 : 0.24 – 1 level Distance level Pip : 30 pips Multiplier : 1.5 TP : 5 pip SL : 0 (\$) Trailing : 0 pip Inverse : False == Optional == Hedge Multiplier : 1.1 Hedge Open: 10 Hedge SL : 50 Hedge TP : 0 Hedge BEP : 10
2	CADJPY EURNZD GBPAUD USDCHF	\$5000 Runs EA on normal mode (Invers: false) Fund needed is smaller (combined margin between 4 pairs)	1:400 (the higher the better)	B1: 0.01 – 4 level B2 : 0.02 – 3 level B3 : 0.03 – 2 level B4 : 0.06 – 1 level B5 : 0.12 – 1 level B6 : 0.24 – 1 level Distance level Pip : 30 pips Multiplier : 1.5 TP : 5 pip SL : 0 (\$) Trailing : 0 pip Inverse : False == Optional == Hedge Multiplier : 1.1 Hedge Open: 10 Hedge SL : 50 Hedge TP : 0 Hedge BEP : 10
3	USDCAD NZDJPY EURGBP AUDCHF	\$5000 Runs EA on normal mode (Invers: false) Fund needed is smaller (combined margin between 4 pairs)	1:400 (the higher the better)	B1: 0.01 – 4 level B2 : 0.02 – 3 level B3 : 0.03 – 2 level B4 : 0.06 – 1 level B5 : 0.12 – 1 level B6 : 0.24 – 1 level Distance level Pip : 30 pips Multiplier : 1.5 TP : 5 pip SL : 0 (\$) Trailing : 0 pip Inverse : False == Optional == Hedge Multiplier : 1.1

				Hedge Open: 10 Hedge SL : 50 Hedge TP : 0 Hedge BEP : 10
4	GOLD (XAUUSD)	\$10000 Runs EA on invers mode	1:400 (the higher the better)	B1: 0.01 – 4 level B2 : 0.02 – 3 level B3 : 0.03 – 2 level B4 : 0.06 – 1 level B5 : 0.12 – 1 level B6 : 0.24 – 1 level Distance level Pip : 100 pips Multiplier : 1.5 TP : 5 pip SL : 0 (\$) Trailing : 0 pip Inverse chart 1: FALSE Inverse chart 2 : TRUE == Optional == Hedge Multiplier : 1.1 Hedge Open: 20 Hedge SL : 100 Hedge TP : 0 Hedge BEP : 20
4	BTCUSD	\$1000 Runs EA on invers mode	1:250 (maximum leverage for XM account)	B1 : 0.01 – 15 level Distance level Pip : 4000 pip Multiplier : 1.0 TP : 500 pip SL : 0 Trailing : 0 pip Inverse chart 1: FALSE Inverse chart 2 : TRUE

You can upscale based on the table below

The upscale only applied to lot size, other parameter still refer to the parameter above

Balance XM MICRO Single Pair	\$250	\$500	\$1000	\$2000	\$3000	\$4000	\$5000
B1 - 4 lvl	0.1 lot	0.2 lot	0.4 lot	0.7 lot	1.0 lot	1.5 lot	2.0 lot
B2 – 3 lvl	0.2 lot	0.3 lot	0.6 lot	1.1 lot	1.5 lot	2.3 lot	3.0 lot
B3 – 2 lvl	0.3 lot	0.5 lot	0.9 lot	1.7 lot	2.3 lot	3.5 lot	4.5 lot
B4 – 1 lvl	0.6 lot	1.0 lot	1.8 lot	3.4 lot	4.6 lot	7.0 lot	9.0 lot
B5 – 1 lvl	1.2 lot	2.0 lot	3.6 lot	6.8 lot	9.2 lot	14.0 lot	18.0 lot
B6 – 1 lvl	2.4 lot	4.0 lot	7.2 lot	13.6 lot	18.4 lot	28.0 lot	36.0 lot

Balance XM MICRO 4 Pairs		\$500	\$1000	\$2000	\$3000	\$4000	\$5000
B1 - 4 lvl		0.1 lot	0.2 lot	0.4 lot	0.7 lot	1.0 lot	1.5 lot
B2 – 3 lvl		0.2 lot	0.3 lot	0.6 lot	1.1 lot	1.5 lot	2.3 lot
B3 – 2 lvl		0.3 lot	0.5 lot	0.9 lot	1.7 lot	2.3 lot	3.5 lot
B4 – 1 lvl		0.6 lot	1.0 lot	1.8 lot	3.4 lot	4.6 lot	7.0 lot
B5 – 1 lvl		1.2 lot	2.0 lot	3.6 lot	6.8 lot	9.2 lot	14.0 lot
B6 – 1 lvl		2.4 lot	4.0 lot	7.2 lot	13.6 lot	18.4 lot	28.0 lot

Balance XM MICRO GOLD			\$1000	\$2000	\$3000	\$4000	\$5000
B1 - 4 lvl			0.1 lot	0.2 lot	0.3 lot	0.4 lot	0.5 lot
B2 - 3 lvl			0.2 lot	0.3 lot	0.5 lot	0.6 lot	0.8 lot
B3 - 2 lvl			0.3 lot	0.5 lot	0.8 lot	0.9 lot	1.2 lot
B4 - 1 lvl			0.6 lot	1.0 lot	1.6 lot	1.8 lot	2.4 lot
B5 - 1 lvl			1.2 lot	2.0 lot	3.2 lot	3.6 lot	4.8 lot
B6 - 1 lvl			2.4 lot	4.0 lot	6.4 lot	7.2 lot	9.6 lot

Balance STANDARD ACCOUNT Single Pair	\$2500	\$5000	\$10000	\$20000	\$30000	\$40000	\$50000
B1 - 4 lvl	0.01 lot	0.02 lot	0.04 lot	0.07 lot	0.10 lot	0.15 lot	0.20 lot
B2 - 3 lvl	0.02 lot	0.03 lot	0.06 lot	0.11 lot	0.15 lot	0.23 lot	0.30 lot
B3 - 2 lvl	0.03 lot	0.05 lot	0.09 lot	0.17 lot	0.23 lot	0.35 lot	0.45 lot
B4 - 1 lvl	0.06 lot	0.10 lot	0.18 lot	0.34 lot	0.46 lot	0.70 lot	0.90 lot
B5 - 1 lvl	0.12 lot	0.20 lot	0.36 lot	0.68 lot	0.92 lot	1.40 lot	1.80 lot
B6 - 1 lvl	0.24 lot	0.40 lot	0.72 lot	1.36 lot	1.84 lot	2.80 lot	3.60 lot

Balance STANDARD ACCOUNT 4 Pairs		\$5000	\$10000	\$20000	\$30000	\$40000	\$50000
B1 - 4 lvl		0.01 lot	0.02 lot	0.04 lot	0.07 lot	0.10 lot	0.15 lot
B2 - 3 lvl		0.02 lot	0.03 lot	0.06 lot	0.11 lot	0.15 lot	0.23 lot
B3 - 2 lvl		0.03 lot	0.05 lot	0.09 lot	0.17 lot	0.23 lot	0.35 lot
B4 - 1 lvl		0.06 lot	0.10 lot	0.18 lot	0.34 lot	0.46 lot	0.70 lot
B5 - 1 lvl		0.12 lot	0.20 lot	0.36 lot	0.68 lot	0.92 lot	1.40 lot
B6 - 1 lvl		0.24 lot	0.40 lot	0.72 lot	1.36 lot	1.84 lot	2.80 lot

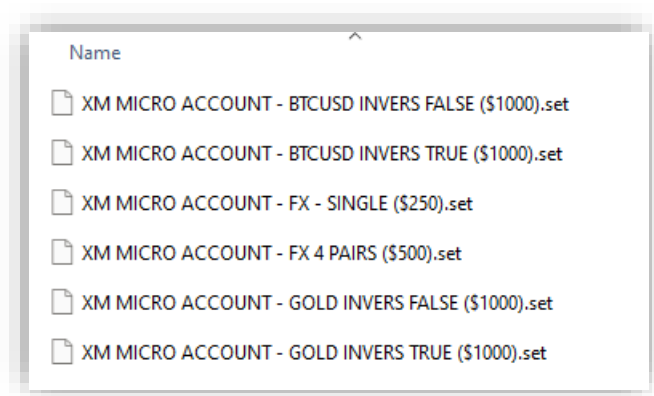
Balance STANDARD ACCOUNT GOLD			\$10000	\$20000	\$30000	\$40000	\$50000
B1 - 4 lvl			0.01 lot	0.02 lot	0.03 lot	0.04 lot	0.05 lot
B2 - 3 lvl			0.02 lot	0.03 lot	0.05 lot	0.06 lot	0.08 lot
B3 - 2 lvl			0.03 lot	0.05 lot	0.08 lot	0.09 lot	0.12 lot
B4 - 1 lvl			0.06 lot	0.10 lot	0.16 lot	0.18 lot	0.24 lot
B5 - 1 lvl			0.12 lot	0.20 lot	0.32 lot	0.36 lot	0.48 lot
B6 - 1 lvl			0.24 lot	0.40 lot	0.64 lot	0.72 lot	0.96 lot

You can modify the parameter setting above and it's highly recommended to backtest it first or try in demo account before applying it on the real account.

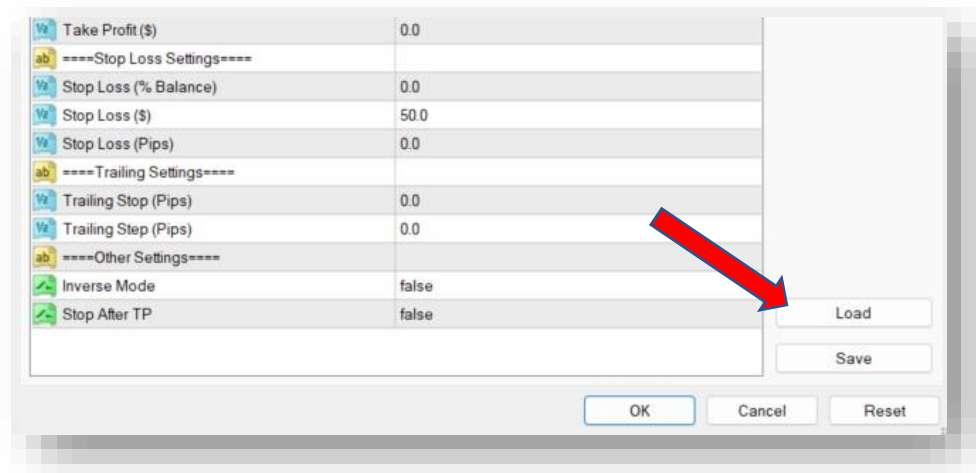
Preset Files

We provide Preset files to simplify the setting.
How to install preset files, pls follow these steps

1. Menu FILE – OPEN DATA FOLDER – MQL4 – PRESETS
2. Copy File FlexScalper-Preset.ZIP to above folder
3. Unzip files



4. Click LOAD and select your preset.



Tips EA Usage

To give sustainable long term profit, diversification is the key, combine several pairs which has small or no correlation between them.

Do not use pairs with single currency in 1 MT4, e.g : EURUSD, GBPUSD, USDCAD, USDJPY

These 4 pairs has USD and if USD move strongly, then all pairs will trending and possibly could give deep drawdown.

Keep margin level above 500% (in case you donot use StopLoss)

Margin Level >1000% - safe

Margin Level 1000% - 500% - precautions

Margin Level <500% - recommended to top up to reach 1000%

Useful Links

EA – Flexscalper: <https://flexscalper.com/download>

Activation : <https://flexscalper.com/activation>

Preferred Broker & VPS Provider

XM – <https://flexscalper.com/xm>

FXVM – <https://flexscalper.com/fxvm>

Contact Us

Any inquiries ?

email to flexscalperea@gmail.com

More detailed tutorials are available on videos, Please check <https://www.flexscalper.com> for more info